

# State of Wyoming Corner Record

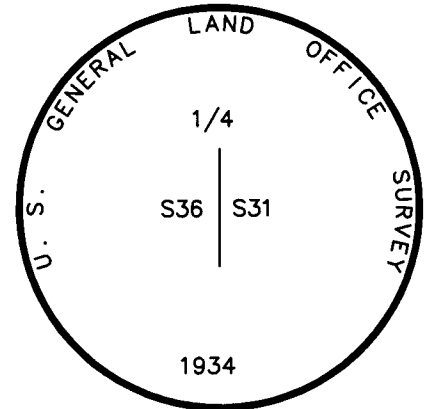
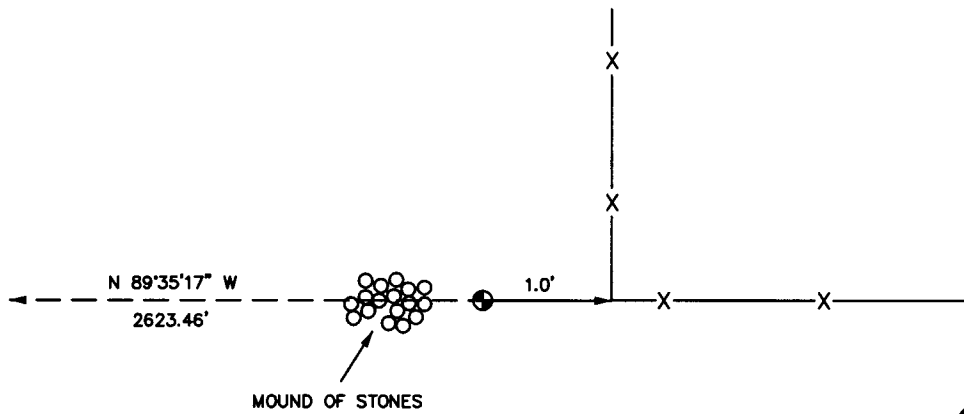
SXX SXX

*(In compliance with the CORNER PERPETUATION AND FILING ACT, Wyoming Statutes, 1997 Section 33-29-140 et. seq., and the Rules and Regulations of the Board of Professional Engineers and Professional Land Surveyors)*

Reverse side of this form may be used if more space is needed.

Record of original survey and citation of source of historical information (if corner is lost or obliterated). Description of corner monumentation evidence found and/or monument and accessories established to perpetuate the location of this corner. Sketch of relative location of monument, accessories, and reference points with course and distance to adjacent corner(s) (if determined in this survey). Method and rationale for reestablishment of lost or obliterated corner.

**RECORD:** THE ORIGINAL 1/4 SECTION CORNER OF SECTIONS 31 AND 36, ON EAST BOUNDARY OF TOWNSHIP, WHICH IS A SANDSTONE, 20 X 12 X 6 INS.  
**MONUMENT FOUND:** MARKED 1/4 ON WEST FACE, FIRMLY SET IN GROUND.  
**MONUMENT SET:** FOUND A 2 1/2" GLO BRASS CAP (1934). WITH MOUND OF STONES TO THE WEST.  
**MONUMENT SET:** NOTHING SET.  
**REFERENCES:** NOTHING SET.



Date of Field Work: 8/31/98

Office Reference: 98147

## Monument Inscription

### Cross Index Plat

	1	2	3	4	5	6	7	8	9	10	11	12	13	14	15	16	17	18	19	20	21	22	23	24	25		
A																											A
B	+	+	+	+	+	+	+	+	+	+	+	+	+	+	+	+	+	+	+	+	+	+	+	+	+	+	B
C		6			5				4					3					2						1		C
D	+	+	+	+	+	+	+	+	+	+	+	+	+	+	+	+	+	+	+	+	+	+	+	+	+	+	D
E																											E
F	+	+	+	+	+	+	+	+	+	+	+	+	+	+	+	+	+	+	+	+	+	+	+	+	+	+	F
G		7			8				9					10					11						12		G
H	+	+	+	+	+	+	+	+	+	+	+	+	+	+	+	+	+	+	+	+	+	+	+	+	+	+	H
J																											J
K	+	+	+	+	+	+	+	+	+	+	+	+	+	+	+	+	+	+	+	+	+	+	+	+	+	+	K
L		18			17				16					15					14						13		L
M	+	+	+	+	+	+	+	+	+	+	+	+	+	+	+	+	+	+	+	+	+	+	+	+	+	+	M
N																											N
O	+	+	+	+	+	+	+	+	+	+	+	+	+	+	+	+	+	+	+	+	+	+	+	+	+	+	O
P		19			20				21					22					23						24		P
Q	+	+	+	+	+	+	+	+	+	+	+	+	+	+	+	+	+	+	+	+	+	+	+	+	+	+	Q
R																											R
S	+	+	+	+	+	+	+	+	+	+	+	+	+	+	+	+	+	+	+	+	+	+	+	+	+	+	S
T		30			29				28					27					26						25		T
U	+	+	+	+	+	+	+	+	+	+	+	+	+	+	+	+	+	+	+	+	+	+	+	+	+	+	U
V																											V
W	+	+	+	+	+	+	+	+	+	+	+	+	+	+	+	+	+	+	+	+	+	+	+	+	+	+	W
X		31			32				33					34					35						36		X
Y	+	+	+	+	+	+	+	+	+	+	+	+	+	+	+	+	+	+	+	+	+	+	+	+	+	+	Y
Z																											Z
	1	2	3	4	5	6	7	8	9	10	11	12	13	14	15	16	17	18	19	20	21	22	23	24	25		

Firm/Agency, Address

**STEIL SURVEYING SERVICES LLC**  
**1102 WEST 19th STREET**  
**CHEYENNE WY 82001**  
 Telephone Number: **(307) 634-7273**

This corner record was prepared by me or under my direction and supervision.

SEAL & SIGNATURE



Corner Name WEST 1/4 Corner Section 31, T 15 N, R 69 W, 6th P.M.  
 County: LARAMIE Wyoming

Cross-Index No.: X-1

RECORDED 7/07/2009 AT 8:32 AM REC# 526162 X# 2121 PG# 835  
 DEBRA K. LATHROP, CLERK OF LARAMIE COUNTY, WY PAGE 1 OF 2

